



# Virginia Healthcare Workforce Briefs

Indicators from the Bureau of Labor Statistics'  
Current Employment Statistics Survey  
**Series 2: Regional & Sectoral Employment**

Series 2, Issue 128

November 2022

## Inside this Brief:

Regional Employment	2
Regional Employment Growth	3
Subsector Employment	3
Subsector Employment Growth	4
Region Map	5
About the Data	6

## Highlights

- ◆ Data in this series are not seasonally adjusted and exhibit short-term volatility from fluctuations in holidays, weekends, weather and other seasonal factors. Estimates for the most recent month are preliminary.
- ◆ Northern Virginia's Health Care & Social Assistance (HC&SA) sector enjoyed very strong employment growth in October thanks to the creation of 3,500 new HC&SA jobs, which translates into an impressive 33.9% annualized growth rate. Meanwhile, Hampton Roads produced 1,300 new HC&SA jobs in October, and the Rest of Virginia increased HC&SA employment by 900 during the month. However, Richmond's HC&SA sector lost 100 jobs in October.
- ◆ All four of Virginia's HC&SA subsectors enjoyed positive employment growth during the month. Social Assistance experienced the largest employment gain with 2,400 new jobs created in October, which translates into a remarkable 43.1% annualized growth rate. At the same time, Ambulatory Health Care Services created 1,500 new jobs in October, while Hospitals added 1,200 new jobs during the month. Finally, Nursing & Residential Care Facilities produced 500 new jobs in October.

*Data in this report are not seasonally adjusted. Self-employed persons, including health professionals in private practice, are not included.*

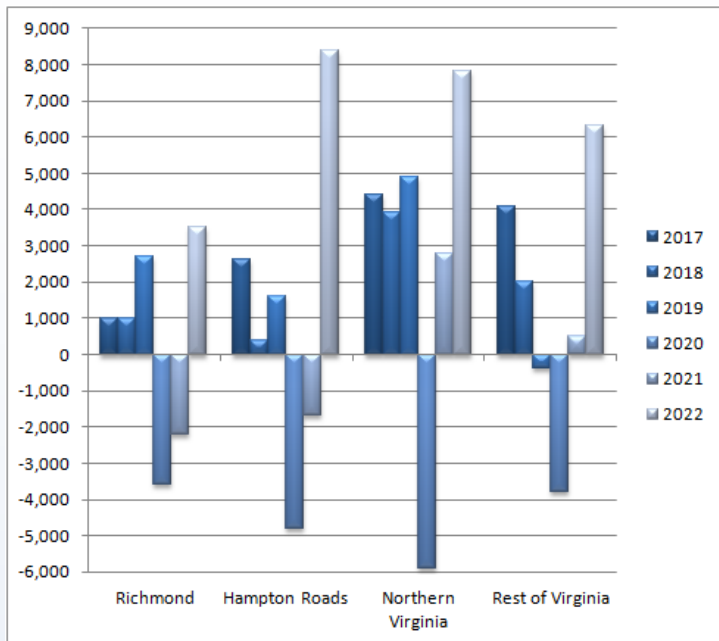
## Data in Brief

Not Seasonally Adjusted*	Employment, in Thousands				Growth Rate, Annualized		
	Oct. 2021	July 2022	Sept. 2022	Oct. 2022	12 Month	3 Month	1 Month
<b>Virginia</b>							
Total Nonfarm	3,992.5	4,070.3	4,093.0	4,121.9	3.2%	5.2%	8.8%
Health Care & Social Assistance	445.2	464.1	465.9	471.5	5.9%	6.5%	15.4%
<b>Hampton Roads</b>							
Total Nonfarm	772.2	789.6	792.5	794.1	2.8%	2.3%	2.4%
Health Care & Social Assistance	92.5	96.7	98.2	99.5	7.6%	12.1%	17.1%
<b>Northern Virginia</b>							
Total Nonfarm	1,506.8	1,528.6	1,526.8	1,542.2	2.3%	3.6%	12.8%
Health Care & Social Assistance	137.1	144.4	142.1	145.6	6.2%	3.4%	33.9%
<b>Richmond</b>							
Total Nonfarm	672.6	683.3	681.7	687.1	2.2%	2.2%	9.9%
Health Care & Social Assistance	83.6	86.0	86.8	86.7	3.7%	3.3%	-1.4%
<b>Rest of Virginia</b>							
Total Nonfarm	1,040.9	1,068.8	1,092.0	1,098.5	5.5%	11.6%	7.4%
Health Care & Social Assistance	132.0	137.0	138.8	139.7	5.8%	8.1%	8.1%

Preliminary estimates are italicized

\* Seasonally adjusted data are adjusted by the Bureau of Labor Statistics to account for weather and other seasonal changes. Since the U.S. Bureau of Labor Statistics does not provide seasonally adjusted data at this level, this series uses **non**-seasonally adjusted data exclusively. Seasonal variation may account for some of the variation in time series data. When comparing data in this series to other HWDC series or other publications, it is important to note whether the data reported have been seasonally adjusted.

### Regional HC&SA Employment Growth, Level



**Figure 1: Annual & YTD Change in HC&SA Regional Employment (Not Seasonally Adjusted, Full-Year Change for 2017-2021, Year-to-Date Change for 2022).**

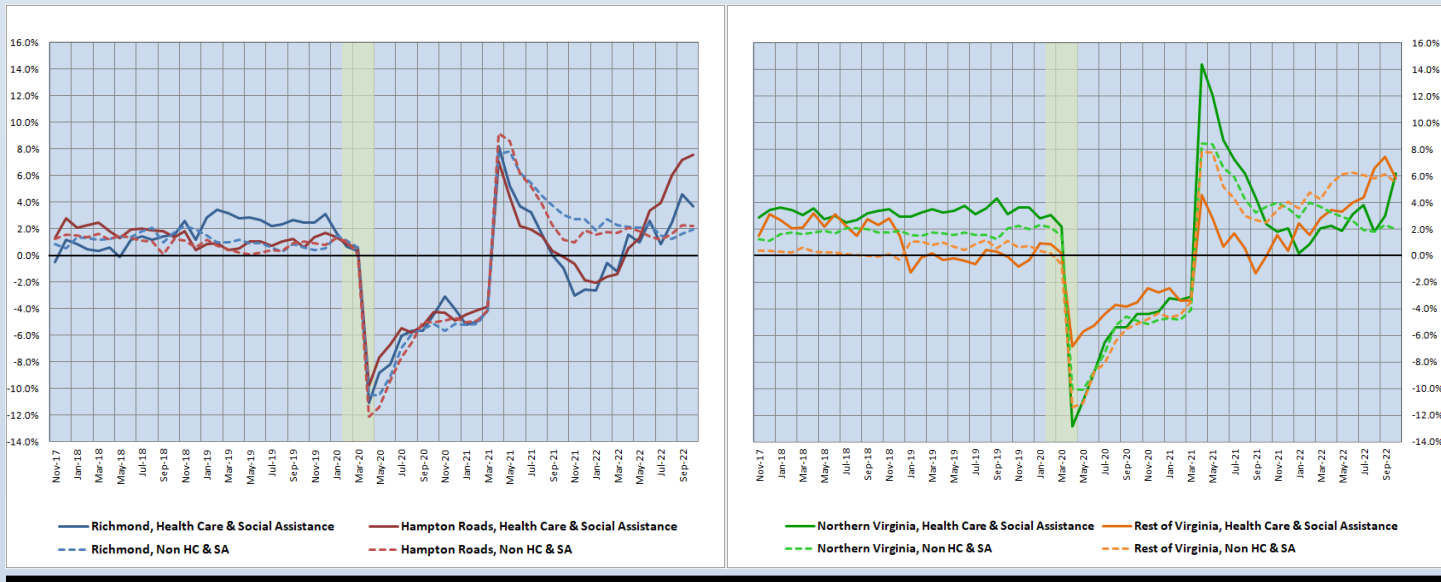
According to the preliminary data released on Friday, November 18, 2022, by the U.S. Department of Labor, Bureau of Labor Statistics, Northern Virginia’s Health Care & Social Assistance (HC&SA) sector experienced its largest monthly employment gain in more than two years after creating 3,500 new HC&SA jobs in October, a gain that represents an exceptional 33.9% annualized growth rate. Northern Virginia’s HC&SA sector is on pace to enjoy its largest full-year employment gain in recent memory. So far this year, Northern Virginia has created 7,800 HC&SA jobs.

Only Hampton Roads has added more HC&SA jobs in 2022. With 1,300 new HC&SA jobs created in October, Hampton Roads has now produced a total of 8,400 jobs so far this year. Given the relative weakness of Hampton Roads’ HC&SA job market in recent years — the region experienced a net loss of HC&SA jobs between 2016 and 2021 — this year’s performance is particularly remarkable. Finally, the Rest of Virginia created 900 new HC&SA jobs in October, while Richmond’s HC&SA sector lost 100 jobs during the month.

### Year-Over-Year Regional Employment Growth

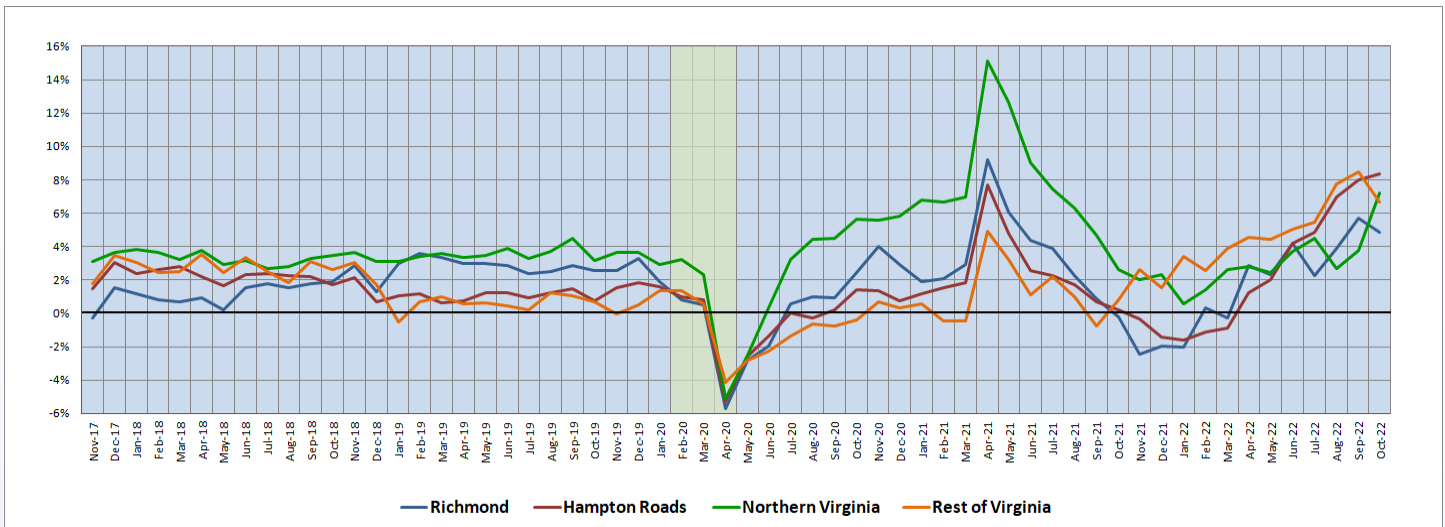
Northern Virginia saw its year-over-year HC&SA employment growth rate more than double from 2.97% to 6.20% during the month, due to the very strong HC&SA job gain in October. With this increase, Northern Virginia’s year-over-year HC&SA employment growth rate has now reached its highest level since July 2021. Hampton Roads is enjoying an even faster year-over-year HC&SA employment growth rate, which increased from 7.21% to 7.57% in October. In fact, Hampton Roads now has the highest growth rate in the state given that the Rest of Virginia saw its own growth rate fall from 7.43% to 5.83%. As for Richmond, its year-over-year HC&SA employment growth rate fell from 4.58% to 3.71% in October.

**Figure 2: Year-Over-Year Employment Growth (Not Seasonally Adjusted).**



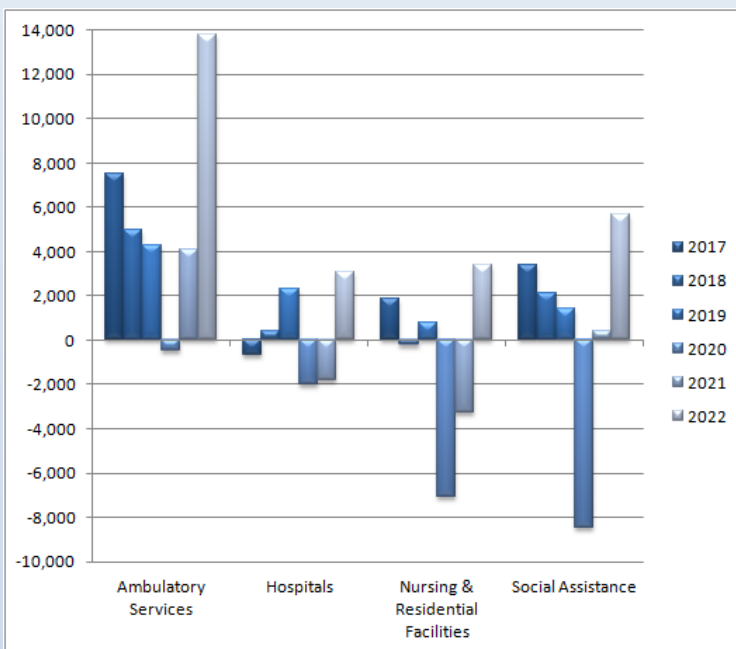
## 12-Month Average Employment Growth by Region

**Figure 3: 12-Month Moving Average, HC&SA Regional Employment Growth Rate (Not Seasonally Adjusted).**



In September, Hampton Roads saw its 12-month HC&SA employment growth rate moving average increase to its highest value in well over one decade, and yet this moving average increased even further in October from 8.00% to 8.39%. Hampton Roads' 12-month HC&SA employment growth rate moving average has increased monotonically ever since falling to a nearly two-year low of -1.62% in January. Meanwhile, Northern Virginia's HC&SA sector experienced a dramatic increase to its own 12-month employment growth rate moving average, which rose from 3.77% to 7.23% in October. On the other hand, Richmond's 12-month HC&SA employment growth rate moving average fell from 5.72% to 4.86%, while the comparable moving average for the Rest of Virginia fell from 8.47% to 6.70%.

## Subsector Employment Growth



**Figure 4: Annual & YTD Change in HC&SA Subsector Employment (Not Seasonally Adjusted, Full-Year Change for 2017-2021, Year-to-Date Change for 2022).**

For the first time since July, all four of Virginia's HC&SA subsectors experienced positive employment growth. This growth was most pronounced in Social Assistance, which created 2,400 new HC&SA jobs in October. This represents the largest monthly employment gain in Social Assistance since March. So far this year, Social Assistance has added 5,700 jobs to the state's economy. This year-to-date employment gain already equals the largest full-year employment gain for this HC&SA subsector in more than one decade. In 2015, Social Assistance also created 5,700 jobs, albeit over the course of an entire year.

Ambulatory Health Care Services is also enjoying a very strong job market in 2022. In October, this HC&SA subsector created 1,500 new jobs. With this gain, Ambulatory Health Care Services has produced an astonishing 13,800 jobs so far this year, which represents more than half of Virginia's total year-to-date HC&SA employment gain. Finally, Hospitals and Nursing & Residential Care Facilities added 1,200 and 500 jobs, respectively, in October.

### Distribution of Growth by Subsector

Not Seasonally Adjusted	Employment, in Thousands				Growth Rate, Annualized		
	Oct. 2021	July 2022	Sept. 2022	Oct. 2022	12 Month	3 Month	1 Month
<b>Virginia</b>							
Health Care & Social Assistance	445.2	464.1	465.9	471.5	5.9%	6.5%	15.4%
<i>Ambulatory Health Care Services</i>	197.0	207.5	208.9	210.4	6.8%	5.7%	9.0%
<i>Hospitals</i>	104.6	106.2	106.5	107.7	3.0%	5.8%	14.4%
<i>Nursing &amp; Residential Care Facilities</i>	68.0	70.4	71.3	71.8	5.6%	8.2%	8.7%
<i>Social Assistance</i>	75.6	80.0	79.2	81.6	7.9%	8.2%	43.1%
<b>Hampton Roads</b>							
Health Care & Social Assistance	92.5	96.7	98.2	99.5	7.6%	12.1%	17.1%
<i>Hospitals</i>	21.7	22.1	22.1	22.4	3.2%	5.5%	17.6%
<b>Northern Virginia</b>							
Health Care & Social Assistance	137.1	144.4	142.1	145.6	6.2%	3.4%	33.9%
<i>Ambulatory Health Care Services</i>	71.1	76.8	76.8	78.5	10.4%	9.2%	30.0%
<i>Hospitals</i>	26.0	26.5	26.6	26.9	3.5%	6.2%	14.4%

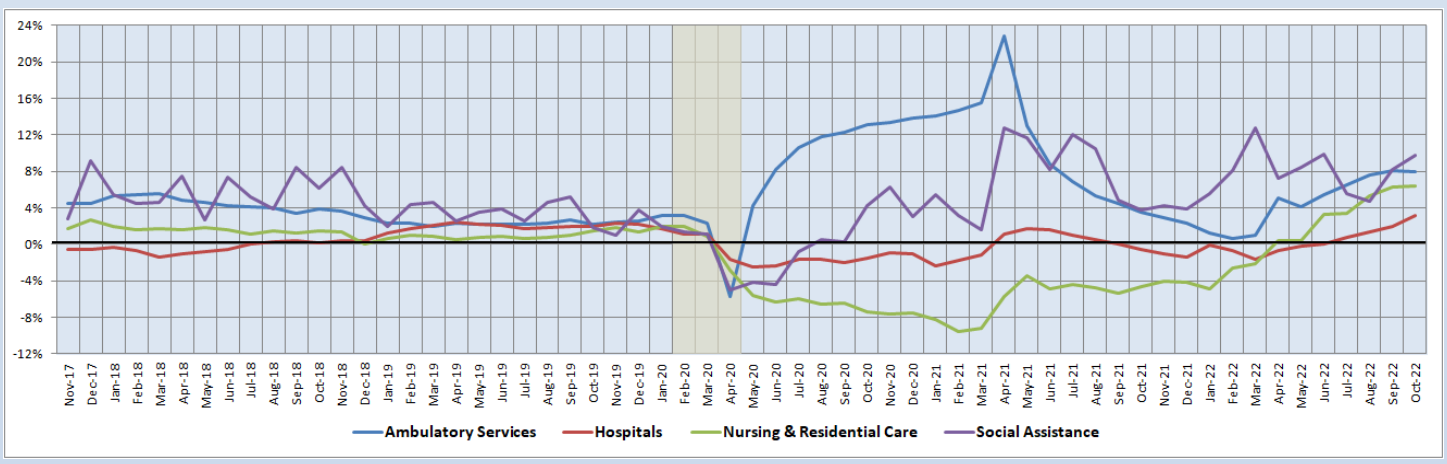
Preliminary estimates are italicized

In October, Social Assistance increased employment at a remarkable 43.1% annualized rate. This growth rate is nearly three times higher than the overall statewide average for the HC&SA sector as a whole. Social Assistance is also enjoying very strong long-term employment growth. Over the past 12 months, employment in Social Assistance has increased by 7.9%. This represents the highest 12-month employment growth rate among Virginia’s four HC&SA subsectors. Meanwhile, Hospitals also increased employment at a rapid rate during the month. In particular, employment in Hospitals increased at a 14.4% annualized rate in October.

### 12-Month Average Employment Growth by Subsector

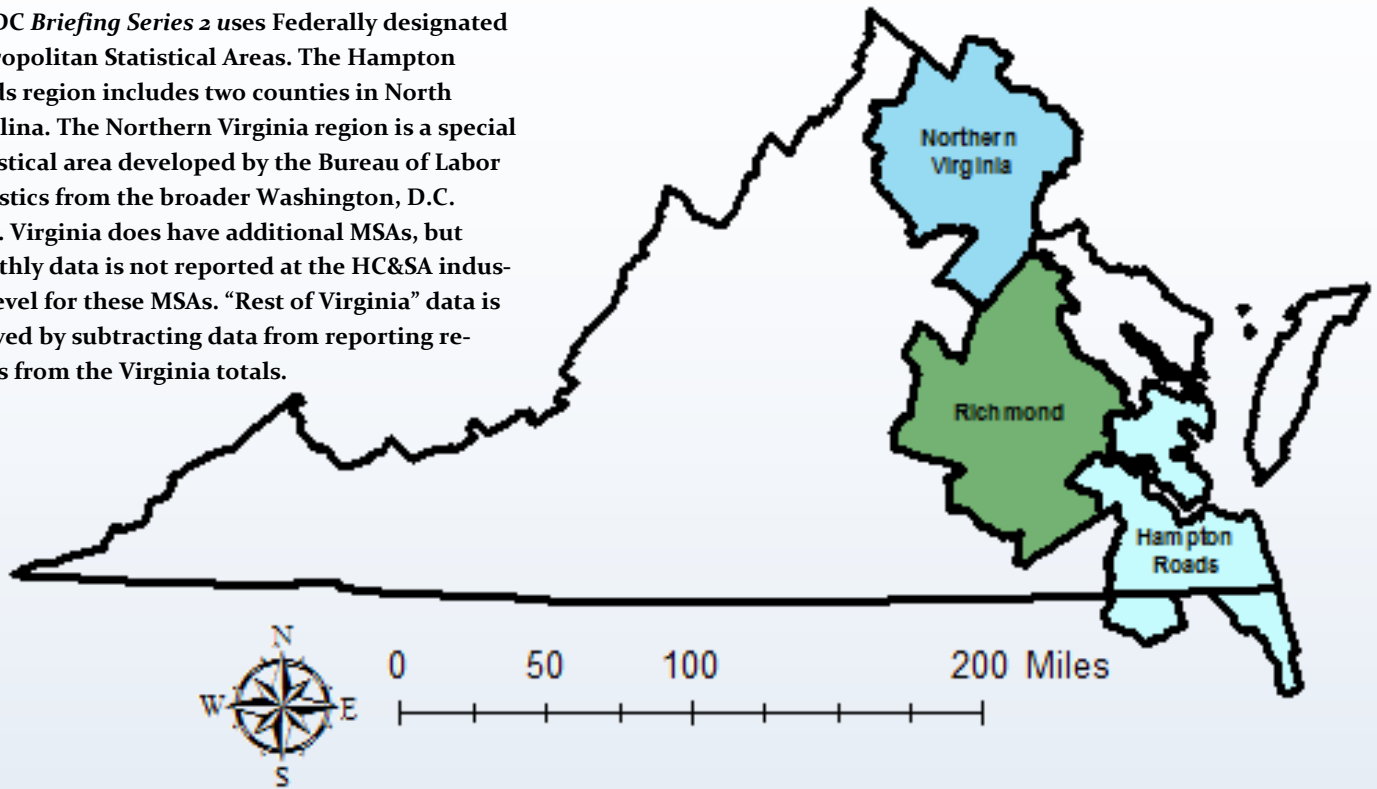
Social Assistance continues to have the highest 12-month employment growth rate moving average in the state. In October, this moving average increased from 8.14% to 9.80%. Meanwhile, Nursing & Residential Care Facilities experienced a more modest increase to its own 12-month employment growth rate moving average, which rose from 6.33% to 6.45% in October. As for Hospitals, its 12-month employment growth rate moving average enjoyed a larger increase from 1.91% to 3.11%, thereby rising to its highest value in nearly six years. However, Ambulatory Health Care Services saw its 12-month employment growth rate moving average fall slightly from 8.13% to 7.97% during the month.

**Figure 5: 12-Month Moving Average, HC&SA Subsector Employment Growth Rate (Not Seasonally Adjusted).**



### Region Map

HWDC *Briefing Series 2* uses Federally designated Metropolitan Statistical Areas. The Hampton Roads region includes two counties in North Carolina. The Northern Virginia region is a special statistical area developed by the Bureau of Labor Statistics from the broader Washington, D.C. MSA. Virginia does have additional MSAs, but monthly data is not reported at the HC&SA industry level for these MSAs. “Rest of Virginia” data is derived by subtracting data from reporting regions from the Virginia totals.



### Region Detail

Northern Virginia		Richmond		Hampton Roads	
<i>Northern VA, (Non-standard CES Area 94783)</i>		<i>Richmond, VA (MSA 40060)</i>		<i>Virginia Beach-Norfolk-Newport News, VA-NC (MSA 47260)</i>	
<b>Counties:</b>	<b>Cities:</b>	<b>Counties:</b>	<b>Cities:</b>	<b>Counties:</b>	<b>Cities:</b>
Arlington	Alexandria	Amelia	Colonial Heights	Gloucester	Chesapeake
Clarke	Fairfax	Caroline	Hopewell	Isle of Wight	Hampton
Culpeper	Falls Church	Charles City	Petersburg	James City	Newport News
Fairfax	Fredericksburg	Chesterfield	Richmond	Mathews	Norfolk
Fauquier	Manassas	Dinwiddie		Surry	Poquoson
Loudoun	Manassas Park	Goochland		York	Portsmouth
Prince William		Hanover			Suffolk
Rappahannock		Henrico		<i>Currituck, NC</i>	Virginia Beach
Spotsylvania		King William		<i>Gates, NC</i>	Williamsburg
Stafford		New Kent			
Warren		Powhatan			
		Prince George			
		Sussex			

Healthcare Workforce  
Data Center

Perimeter Center  
9960 Mayland Drive, Suite 300  
Henrico, VA 23233-1463

Phone: (804) 597-4213  
Fax: (804) 527-4434  
E-mail: [hwdc@dhp.virginia.gov](mailto:hwdc@dhp.virginia.gov)  
Website: [www.dhp.virginia.gov/PublicResources/HealthcareWorkforceDataCenter](http://www.dhp.virginia.gov/PublicResources/HealthcareWorkforceDataCenter)

*HWDC Staff:*

Yetty Shobo, PhD <i>Director</i>	Barbara Hodgdon, PhD <i>Deputy Director</i>
Rajana Siva, MBA <i>Data Analyst</i>	Christopher Coyle <i>Research Assistant</i>

Follow us on. . .

Tumblr: <http://vahwdc.tumblr.com/>

### About the Data

Data in this report are from the U.S. Department of Labor, Bureau of Labor Statistics' Current Employment Statistics program. The CES program surveys about 143,000 businesses and government agencies monthly. Unless otherwise noted, this series uses data that are not seasonally adjusted. Seasonal variations related to weather, holidays, weekends, seasons and other predictable variations are apparent in the data. Short-term changes may be related to seasonal changes rather than underlying trends. Data from recent months is preliminary and subject to revision in future releases from the CES. Revisions will be reported in future editions of this series. Unless otherwise noted, the CES data presented in this series:

**Includes:**

- ◆ Data on employed individuals drawing a paycheck (payroll employees).
- ◆ All employees, regardless of role, occupation or hours worked.
- ◆ HC&SA employees in the private sector only.
- ◆ Persons employed by health professionals in private practice.
- ◆ Both government and private sector workers in nonfarm employment data.

**Does not include:**

- ◆ Self-employed workers or volunteers, including health professionals in private practice.
- ◆ HC&SA employees in the public sector (These are counted as government workers in monthly reports).
- ◆ Information on hours worked or the quality of employment.
- ◆ Government workers in HC&SA level data (Government workers, regardless of occupation and role, are classified as public sector employees).

The Department of Health Professions' Healthcare Workforce Data Center works to improve the data collection and measurement of Virginia's healthcare workforce through regular assessment of workforce supply and demand issues among the 80 professions and 350,000 practitioners licensed in Virginia by the DHP.

The HWDC collects data on Virginia's licensed health professionals through surveys completed during the online license renewal and application process. Survey results and data may be accessed on our website: [www.dhp.virginia.gov/PublicResources/HealthcareWorkforceDataCenter/](http://www.dhp.virginia.gov/PublicResources/HealthcareWorkforceDataCenter/).

The HWDC also provides a series of Virginia Healthcare Workforce Briefs based on data collected by the U.S. Department of Labor's Bureau of Labor Statistics and the U.S. Department of Commerce's Bureau of Economic Analysis.

Virginia Healthcare Workforce Briefs:

Series 1: State & National Employment (Monthly)

Series 2: Virginia Regional & Sectoral Employment (Monthly)

Series 3: Income & Compensation (Quarterly)